

Metal Surgery Milwaukee LTD

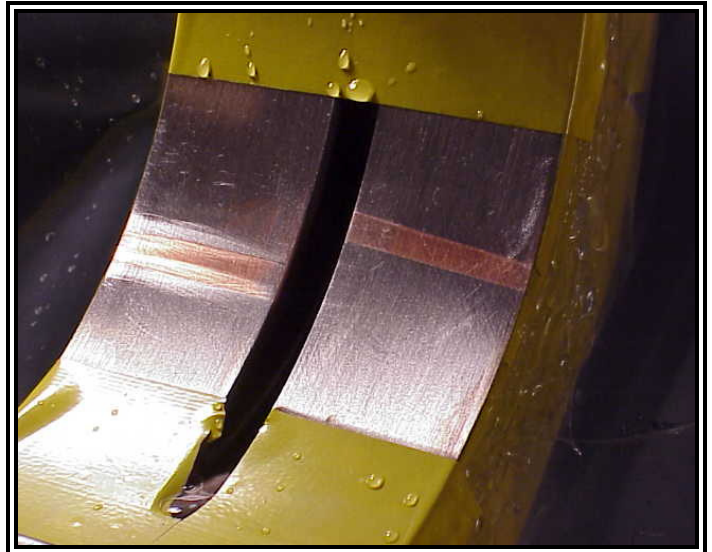
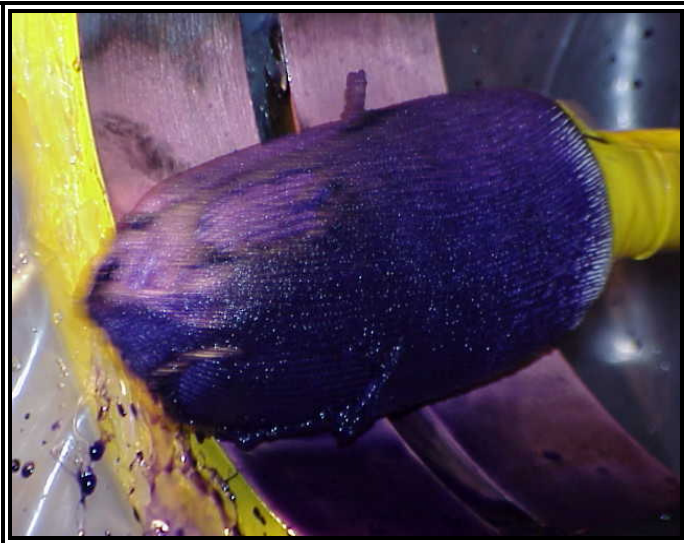
182 W. Oklahoma Ave. Building #23

Milwaukee, WI 53207

Phone 414-744-8313 Fax 414-744-8770

www.metalsurgery.com e-mail: metalsu@execpc.com

WAUKESHA ENGINE AT-27 SULZER ENGINE CASE
TOOLING GOUGES ARE NOT ACCEPTABLE. ANY & ALL VOIDS CAUSE
TEMPERATURE BUILD UP RESULTING IN BEARING FAILURE



(Upper left) **Bearing journal has been prepared and copper plating in process to fill voids.**
(Upper right) **Copper plating is completed; hand finished and ready to nickel plate.**

(Lower left) **Nickel plating is completed.** (Lower right) **Hand finished to Mfg. spec. With no machining required.**

